

**SPECIFICATION**

INPUT VOLTAGE - 24 VDC  
 NOMINAL CURRENT - 1.25 AMPS  
 NOMINAL OUTPUT TORQUE - 15 N.m  
 NOMINAL OUTPUT SPEED - 3.6 RPM

TIGHTENING CURRENT - 2.5 AMPS  
 TIGHTENING TORQUE - 30 N.m (ZERO RPM)  
 BACKLASH - LESS THAN 0.5 DEGREES  
 ROTATION - CONTINUOUS WITH POSITION FEEDBACK  
 ELECTRICAL CONNECTOR - PREFERENTIAL CONNECTOR OR CABLE WHIP

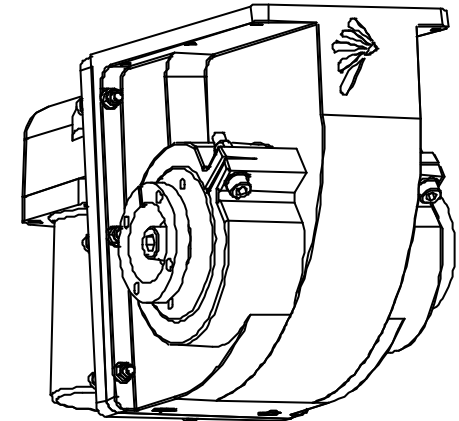
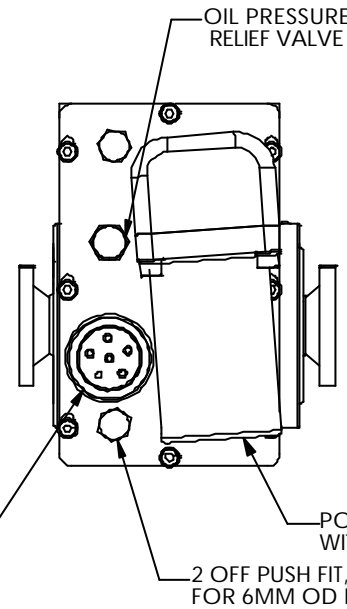
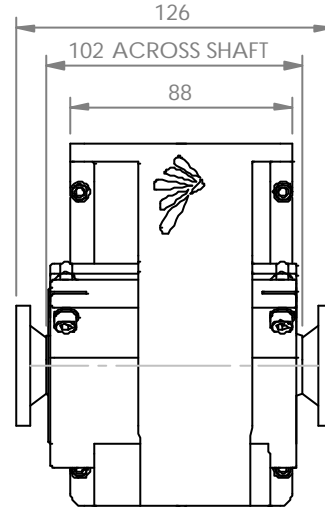
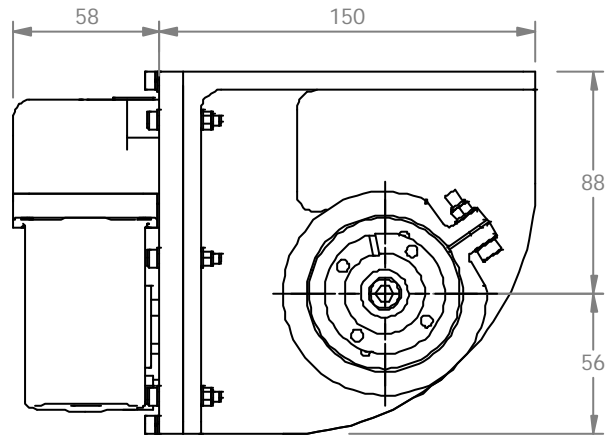
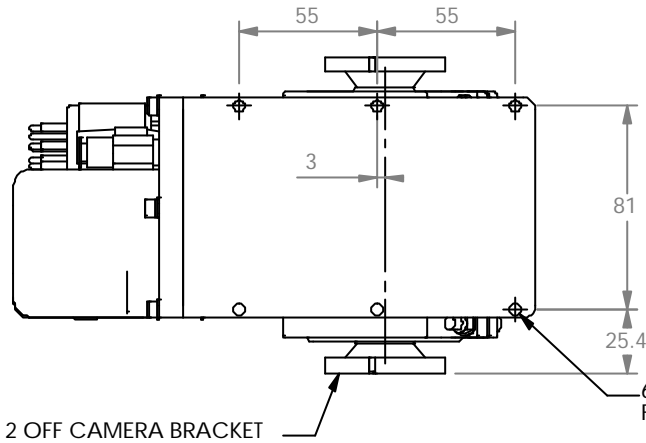
OUTPUT SHAFT - 4 OFF M6 HOLES ON 40 PCD  
 UNIT MOUNTING - 6 OFF M4 SCREWS  
 PRESSURE COMPENSATION - INTEGRAL COMPENSATOR, FILL & BLEED  
 PUSH FIT CONNECTORS AND RELIEF VALVE.

**OPTIONAL EXTRAS**

\*INTEGRAL CURRENT LIMITING ELECTRONICS

**CONNECTOR PIN DETAILS**

PINS - 1 & 2 - 24 vdc SUPPLY / RETURN  
 PIN3 - POTENTIOMETER +ve  
 PIN4 - POTENTIOMETER WIPER  
 PIN5 - POTENTIOMETER -ve



REV	BY	DATE	DESCRIPTION	APP
6	EBR	30/01/2002	NOTES CHANGED	
5	SSM	28/05/2001	NOTES UPDATED	CMI
4	SSM	25/04/2001	UPDATED FOR INTEGRAL COMPENSATOR	RWR
3	MBI	6/4/00	UPDATED FOR PLASTIC BODY	CMI
2	CGM	01/07/97	APPROVED FOR CONSTRUCTION	CMI
0	CGM	27/04/97	PRELIMINARY ISSUE FOR INFORMATION ONLY	CMI
RECORD OF REVISIONS				

MATERIAL	WT AIR	WT WATER
EXPOSED AREAS - BLACK ACETAL, ALUMINIUM ALLOY & STAINLESS STEEL	3.7 kg (E)	2.6 kg (E)
FINISH	DRAWN	CGM
HARD ANODISED (ALUMINIUM PARTS)	DATE	27/04/97
USO, TOLERANCES TO BE	CHECK	MBI
	APPRV.	RWR
	ENGR.	CMI

PROJECT	30 N.m ROTATOR/TILT UNIT
TITLE	15 N.m NOM./30 N.m MAX. ELECTRIC ROTATOR UNIT GENERAL ARRANGEMENT
SCALE (USO)	1:2
ORIG. SIZE	A3
DOC. No.	0020-GA
SHEET	1 of 1
REV	6

Unit 12, Airways Industrial Estate  
 Pitmedden Road, Dyce,  
 Aberdeen, U.K. AB21 0DT  
 Tel: +44 (0) 1224 723623  
 Fax: +44 (0) 1224 723822

PROJECT	30 N.m ROTATOR/TILT UNIT
TITLE	15 N.m NOM./30 N.m MAX. ELECTRIC ROTATOR UNIT GENERAL ARRANGEMENT
SCALE (USO)	1:2
ORIG. SIZE	A3
DOC. No.	0020-GA
SHEET	1 of 1
REV	6