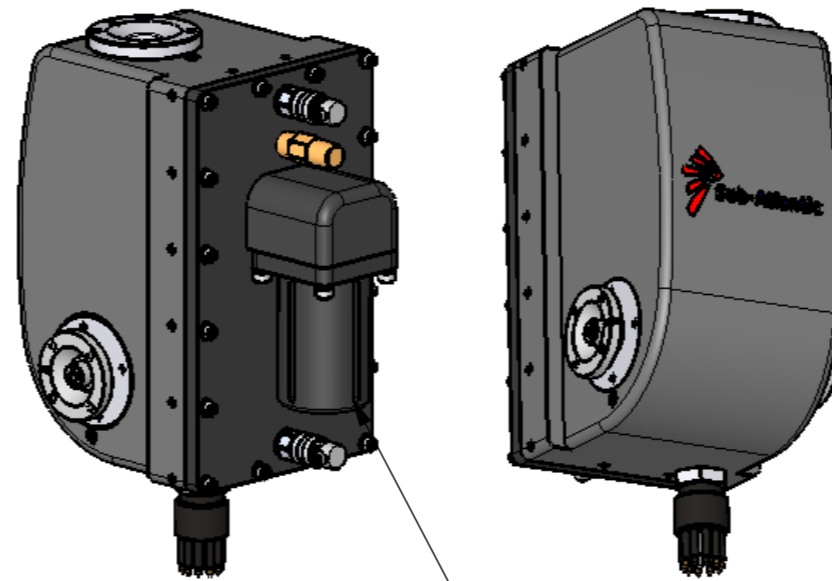
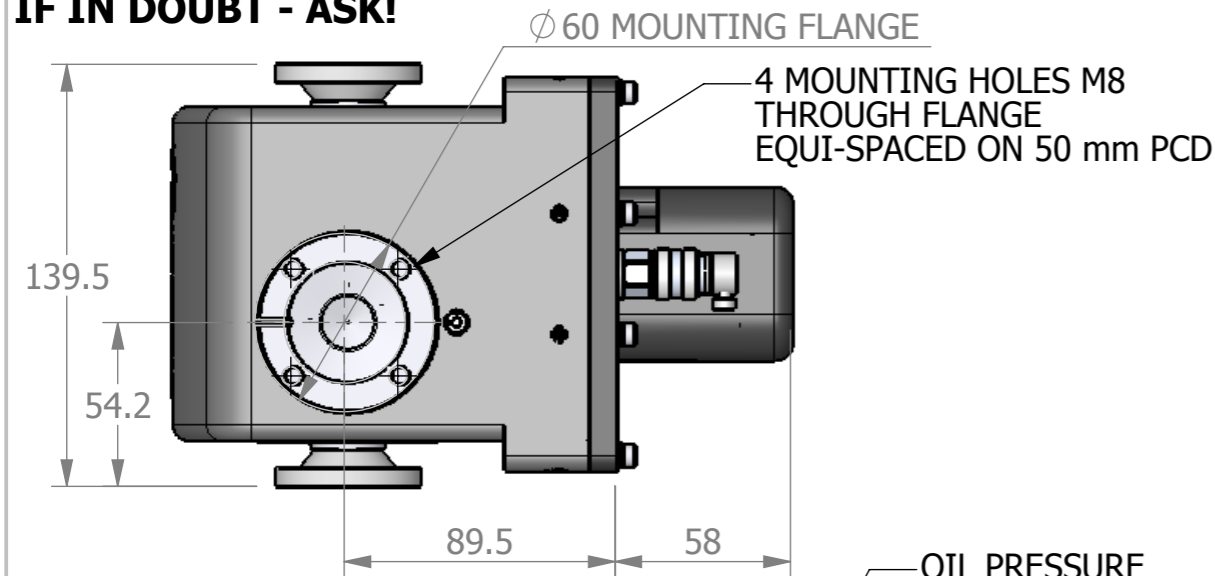


IF IN DOUBT - ASK!

REMOVE SHARP EDGES



SPECIFICATION

INPUT VOLTAGE - 24 VDC
NOMINAL CURRENT - 1.25 AMPS

STANDARD VERSION:
NOMINAL OUTPUT TORQUE - 11 N.m
NOMINAL OUTPUT SPEED - 4.1 RPM

HIGH TORQUE:
NOMINAL OUTPUT TORQUE - 21 N.m
NOMINAL OUTPUT SPEED - 1.4 RPM

BACKLASH - LESS THAN 30 MINUTES OF ARC
ROTATION - CONTINUOUS WITH POSITION FEEDBACK
METAL SHELL WHIP SIZE B OR ALTERNATIVES

TILT OUTPUT SHAFT - 4 OFF M6 HOLES ON 40 PCD
PAN SHAFT MOUNTING - 4 OFF M8 SCREWS
PRESSURE COMPENSATION - INTEGRAL COMPENSATOR
UNIT HAS BEEN PROOF TESTED TO 6000 MSW

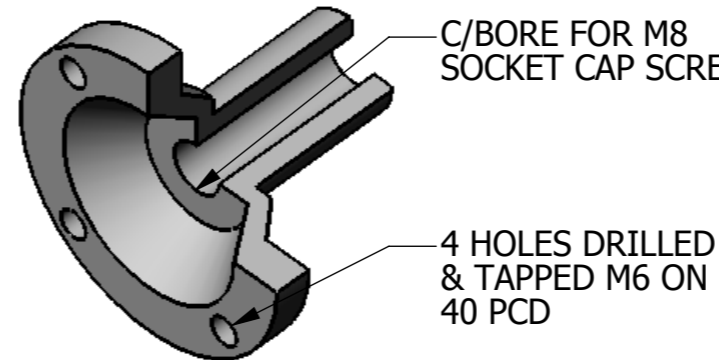
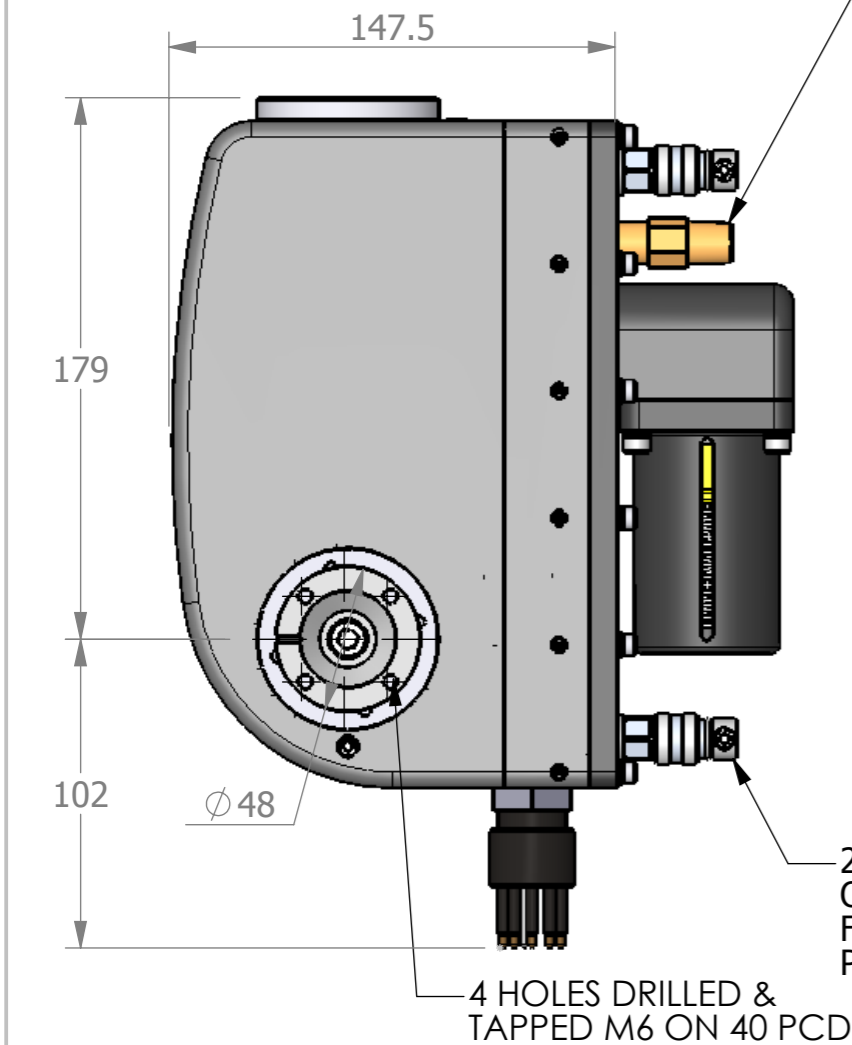
OPTIONAL EXTRAS

- * CURRENT/TORQUE LIMITING ELECTRONICS
- * CAMERA MOUNTING BRACKETS
- * ALTERNATIVE ELECTRICAL CONNECTORS (8 PIN MIN.)
- * SEAL SPARES KIT (PART REF. 1128-MAS-SK)
- * ELECTRICAL SPARES KIT (PART REF. 0058-MAS-EK)

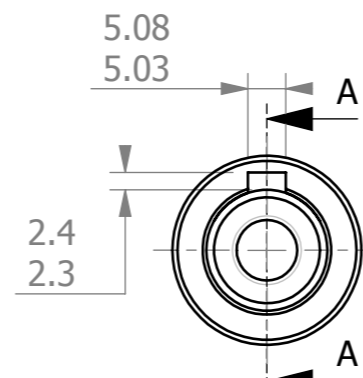
ELECTRICAL CONNECTION DETAILS

ELECTRICAL CONNECTOR PINS

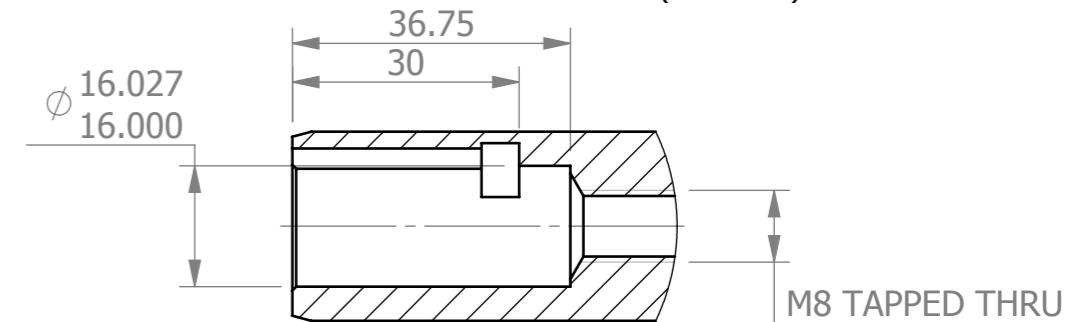
1. 24 vdc TILT MOTOR
2. 24 vdc TILT MOTOR
3. 24 vdc PAN MOTOR
4. 24 vdc PAN MOTOR
5. +5 vdc TO FEEDBACK POTENTIOMETERS
6. -5 vdc TO FEEDBACK POTENTIOMETERS
7. PAN POSITION FEEDBACK (10 k ohm)
8. TILT POSITION FEEDBACK (10 k ohm)



CUTAWAY VIEW OF CAMERA BRACKET



**TILT SHAFT BORE DETAILS
TYPICAL EACH END**



A (1 : 1)

SUB- ATLANTIC PART NO'S:
STANDARD: SA-A-1128-MAS
HIGH TORQUE: SA-A-1128-MAS-HT

REV	BY	DATE	DESCRIPTION	APP
3	AJA	18/01/2008	DATA UPDATED WITH NEW INFORMATION	
2	EBR	14/02/2003	SEAL SPARES KIT PART No. CHANGED	RWR
1	SSM	28/05/2001	APPROVED FOR CONSTRUCTION	-

RECORD OF REVISIONS

MATERIAL	EXPOSED AREAS: PLASTIC & STAINLESS STEEL	WT AIR	6.5 kg (E)	WT WATER	3.5 kg (E)
FINISH		DRAWN	SSM		
USO, TOLERANCES TO BE		DATE	28/05/01		
		CHECK	SSM		
		APPRV.	RWR		
		ENGR.	SSM		

Woodburn Road,
Blackburn Business Park, Blackburn,
Aberdeen. U.K. AB21 0PS
Tel: +44 (0) 1224 798660
Fax: +44 (0) 1224 798661
SCALE (UOS) **1:2.5** ORIG. SIZE **A3**

PROJECT	ELECTRIC PAN AND TILTS	
TITLE	24 V PLASTIC BODY	
	GENERAL ARRANGEMENT DRAWING	
	Sheet 1 of 1	
DOC. No.	1146-GA	REV 3