

Dirty Oil Pack (IHPU)

This Dirty Oil Pack is an Isolated Hydraulic Power Unit (IHPU) that can be easily incorporated into a ROV hydraulic system to provide an isolated hydraulic supply for driving tooling and equipment that may potentially otherwise cause contamination to the main ROV hydraulic supply.



- Simple
- Self-Contained
- Variable Pressure and Flow Rate
- Quick to Fit to ROV
- Retro-fittable
- Integral Filters
- Integral Compensator
- Pressure Relief Valve

The unit is a fully self-contained circuit incorporating hydraulic motor, pressure compensated pump, compensated reservoir, pressure and return line filters and multiple inlet/outlet connection points. Hook-up to the ROV is quick and simple by connecting a supply, return and drain line to a ROV valve pack function.

Dirty Oil Pack - IHPU



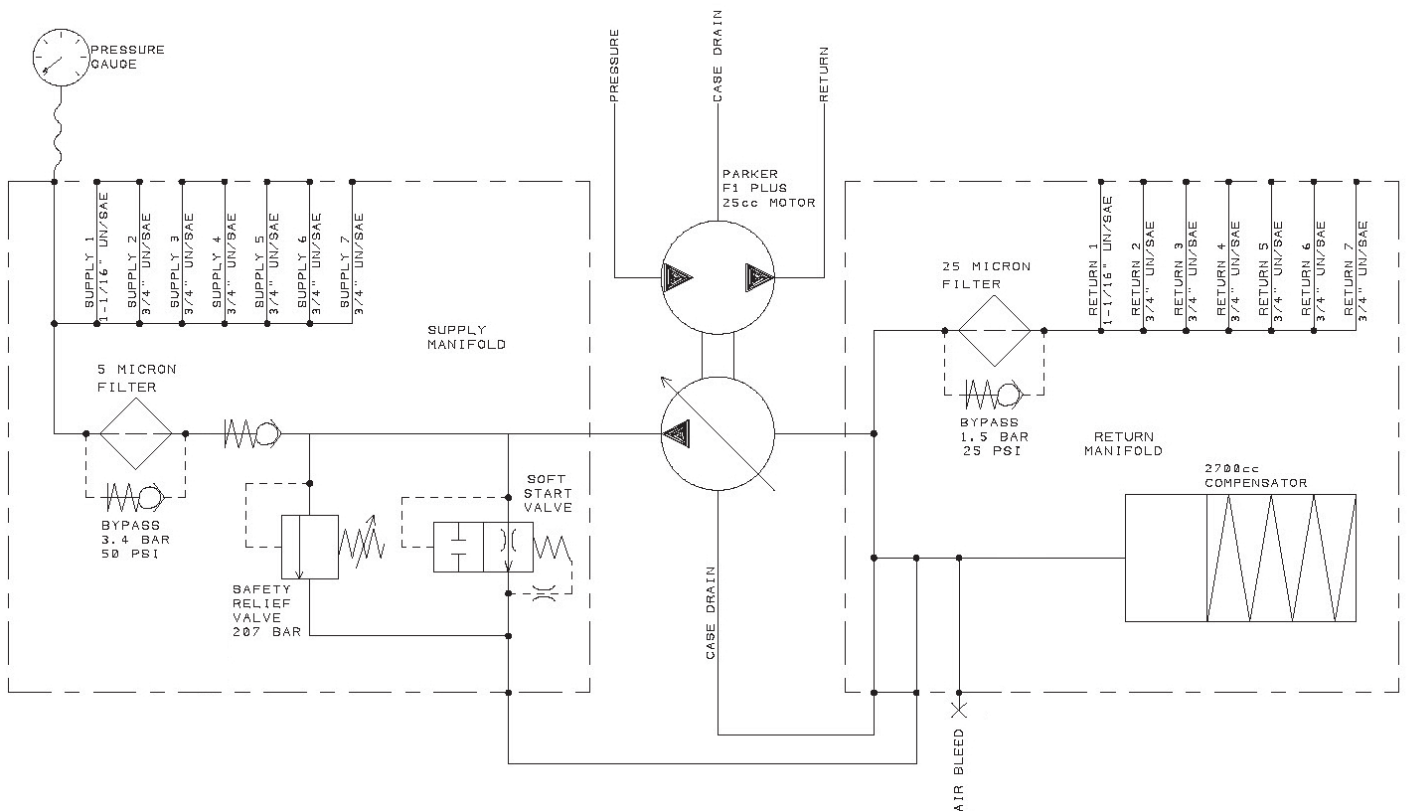
Sub-Atlantic's Dirty Oil Pack - IHPU is a self-contained hydraulic system package that minimises operator cost and complexity when installing on a ROV or tooling package.

Sub-Atlantic Part Number:
SA-H-4016-MAS

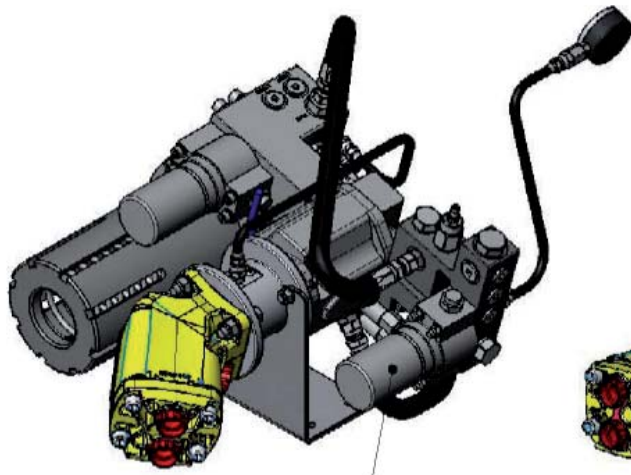
Drawing Number: 4038-GA

IHPU System Specification

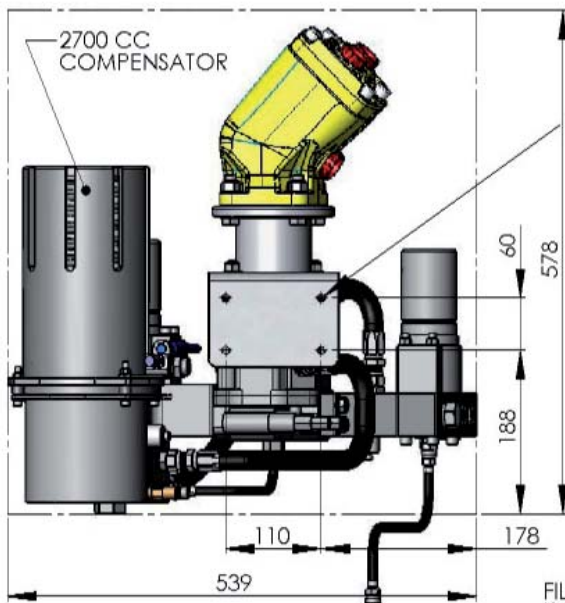
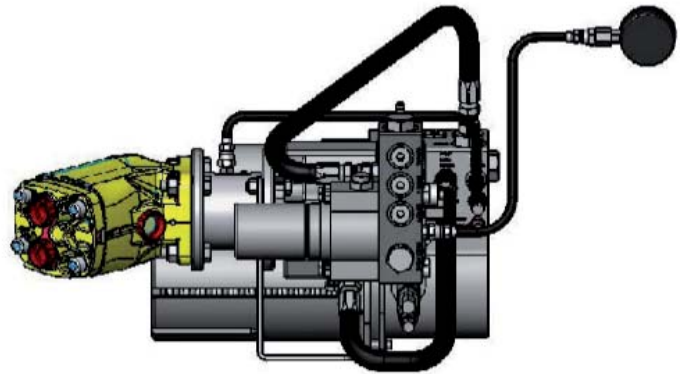
Depth Rating.....	Full Ocean Depth
Pump.....	Rexroth A10VSO 18 cc Pressure Compensated
Motor.....	Parker F1-25cc Fixed Displacement
Safety Valve.....	Adjustable Pressure relief
Weight in Air Empty.....	41.5 kg (approx.)
Weight in Sea Water Empty.....	31.5 kg (approx.)
Max Output pressure.....	200 Bar
Max Output Flow @ 200 Bar.....	57.6 l/min
Reservoir Capacity.....	2.7 Litres (additional compensators available)
Pressure Manifold Outlets.....	6 x 3/4" SAE (3/4-18 UNF) and 1 x 11/16" SAE (11/16-12 UNF)
Return Manifold Inlets.....	6 x 3/4" SAE (3/4-18 UNF) and 1 x 11/16" SAE (11/16-12 UNF)
Motor Porting.....	2 x 3/4" BSPP (Pressure & Return) and 1 x 1/2" BSPP (Case Drain)
Motor Operating Pressure Requirement.....	170 Bar – 200 Max
Motor Operating Flow Requirement.....	up to 80 l/min
Analogue Level Sensor Connector (Optional).....	Subconn MCBH-3M



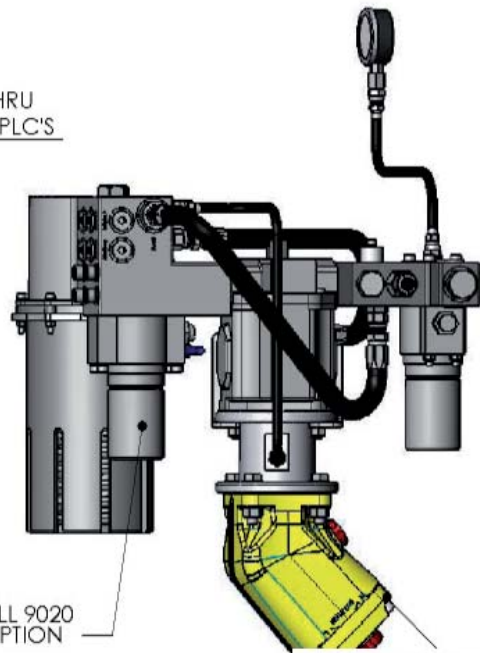
System Hydraulic Schematic



FILTER- PALL 9020
K-HEAD OPTION

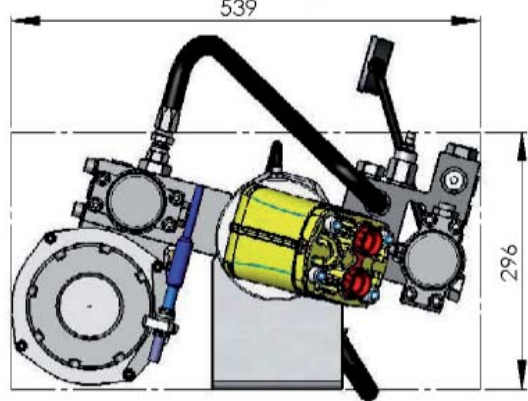
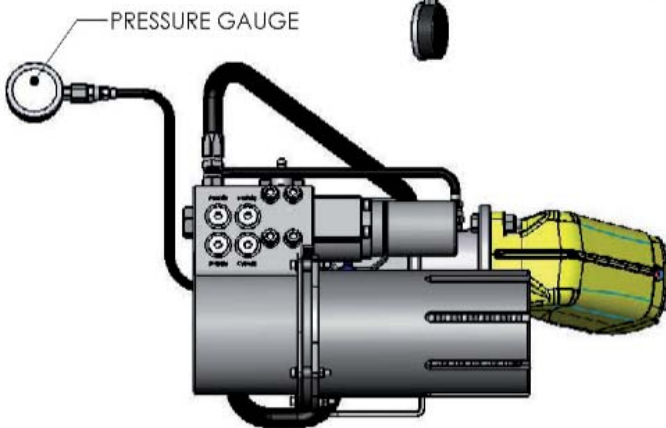


Ø9 THRU
TYP 4 PLC'S



FILTER- PALL 9020
K-HEAD OPTION

HYDRAULIC MOTOR



■ 3D CAD model available on request

The specification details are illustrative for marketing purposes only. Actual equipment may be different as a result of product improvement or other reasons. Specific interface and performance information should be reconfirmed at time of order placement.



Sub-Atlantic Ltd. Woodburn Road, Blackburn Business Park, Blackburn, Aberdeen. AB21 0PS. UK
T: +44 1224 798660 F: +44 1224 798661 E: sales@sub-atlantic.co.uk

Sub-Atlantic Inc. 10642 West Little York, Suite 100, Houston, TX 77041-4014-USA
T: +1 713 329 8730 F: +1 713 329 8299 E: sales@sub-atlantic.com

www.sub-atlantic.com